



**THE EXHIBITORS'  
HANDBOOK  
BOOK**  
**MODULAR DISPLAY SOLUTIONS**

2011 ISSUE 1

**BANNER STANDS | RETRACTABLE** ..... 1-5

BANNER STANDS | TENSION POLE & TELESCOPIC..... 6-7

OUTDOOR PRODUCTS ..... 8-11

DFA | ECONOMY DISPLAY PRODUCTS ..... 12-15

BACKWALLS & INFO CENTERS ..... 16

VECTOR FRAMES | TENSION FABRIC ..... 17

HOPUP | TENSION FABRIC ..... 18-19

POPOP DISPLAY SYSTEMS | CASES ..... 20-24

FORMULATE | EXHIBIT BOOTHS ..... 25-28

FORMULATE | HANGING STRUCTURES ..... 29-31

TABLE THROWS AND RUNNERS ..... 32-33

FOLDING DISPLAY PANELS ..... 34-37

ORBITAL EXPRESS TRUSS ..... 38-54

LINEAR DISPLAY SYSTEMS ..... 55-60

COUNTERS & KIOSKS ..... 61-63

DISPLAY ADDITIONS ..... 64

LITERATURE RACKS ..... 65

CASES & CRATES ..... 66-67

LUMINOSITY | DISPLAY LIGHTING ..... 68

**SYMBOLS USED IN THE EXHIBITORS' HANDBOOK:**



premium product



product can be recycled  
(does not include graphic application)



product is made in the U.S.



affordable product



new addition to  
The Exhibitors' Handbook



economy product



product comes with a carry  
bag or case

**WARRANTY KEY:**



lifetime warranty  
(hardware)



90 day warranty  
(hardware)



5 year warranty  
(hardware)



graphics limited  
1 year warranty



1 year warranty  
(hardware)



graphics limited  
6 month warranty



ORCHID

33.5" WIDE ORCHID



- standard height= 76.75"
- quick to assemble and easy to use
- bamboo base, rail and pole are a sustainable & eco-friendly choice
- slide graphic rail
- includes carry bag





### IMAGINE

31.5" WIDE IMG-A

- variable height= 29.5"- 83.35"
- graphic tensioner
- anti-slip strips along base
- integrated pole storage
- telescopic pole
- interchangeable graphic cassette



### BARRACUDA

31.5" WIDE BCD-A  
BCD-A-BL

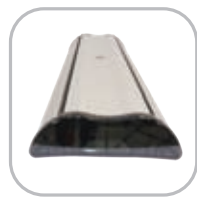
- variable height= 29.5"- 83.35"
- graphic tensioner
- integrated pole storage
- telescopic pole
- anodized silver or black
- shown with optional Lum-2-1 spotlight - available on pg. 68



### EXCALIBUR

31.5" WIDE EXC-A  
EXC-A-BL

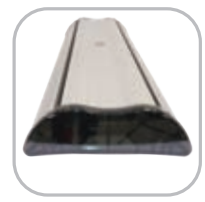
- variable height= 29.5"- 83.35"
- double sided
- graphic tensioner
- integrated pole storage
- telescopic pole



### ADVANCE

31.5" WIDE ADV-A

- variable height= 29.5"- 83.35"
- double sided
- graphic tensioner
- anti-slip strips along base
- integrated pole storage
- interchangeable graphic cassette
- telescopic pole





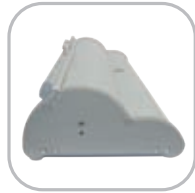
## ORIENT

**31.5" WIDE** silver: ONT-800-S-2  
black: ONT-800-B-2

**35.5" WIDE** silver: ONT-920-S-2  
black: ONT-920-B-2

**39.25" WIDE** silver: ONT-1000-S-2  
black: ONT-1000-B-2

- standard height= 83.25"
- anodized silver or black
- molded end plates
- 3-piece bungee corded pole



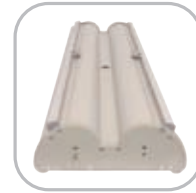
## ORIENT 2

**31.5" WIDE** silver: ONT-800-DBL-S-1  
black: ONT-800-DBL-B-1

**35.5" WIDE** silver: ONT-920-DBL-S-1  
black: ONT-920-DBL-B-1

**39.25" WIDE** silver: ONT-1000-DBL-S-1  
black: ONT-1000-DBL-B-1

- standard height= 83.25"
- double-sided
- anodized silver or black
- molded end plates
- 3-piece bungee corded pole



## BLADE LX

**33.5" WIDE** BLD-LX-GRY

- standard height= 83.25"
- features a gunmetal anodized body & cast chrome end plates
- roller access via flip-top lid & removable self-locking graphic roller mechanism
- quick change graphic slider
- adjustable feet on base are useful on uneven floors
- 3-piece bungee corded pole & premium top rail



## CONTENDER

**23.5" WIDE** silver: CN-24-S  
black: CN-24-B

**29.5" WIDE** silver: CN-30-S  
black: CN-30-B

**35.5" WIDE** silver: CN-36-S  
black: CN-36-B

**47.5" WIDE** black: CN-48-B

- standard height= 77.5"
- swivel-out foot
- powder coated silver or black finish
- laser cut steel ends & swaged pole
- made in the U.S.A.





## ELEVATE

33.5" WIDE ELEVATE

- over 8' tall
- telescopic pole (4 piece)
- roller access via flip-top lid and removable self-locking graphic roller mechanism
- variable height 33.5" – 96"
- black aluminum body with chrome endcaps





**PACIFIC**

**31.5" WIDE** PAC-800-S-2

**35.5" WIDE** PAC-920-S-2

**39.25" WIDE** PAC-1000-S-2

- standard height= 83.75"
- anodized silver
- molded end plates
- swivel-out foot
- 3-piece bungee corded pole



**BLOK**

**33.5" WIDE** BLOK-850

- standard height= 79.25"
- attractive black base with chrome endcaps
- includes carry bag
- bungee pole
- quick and easy to assemble

